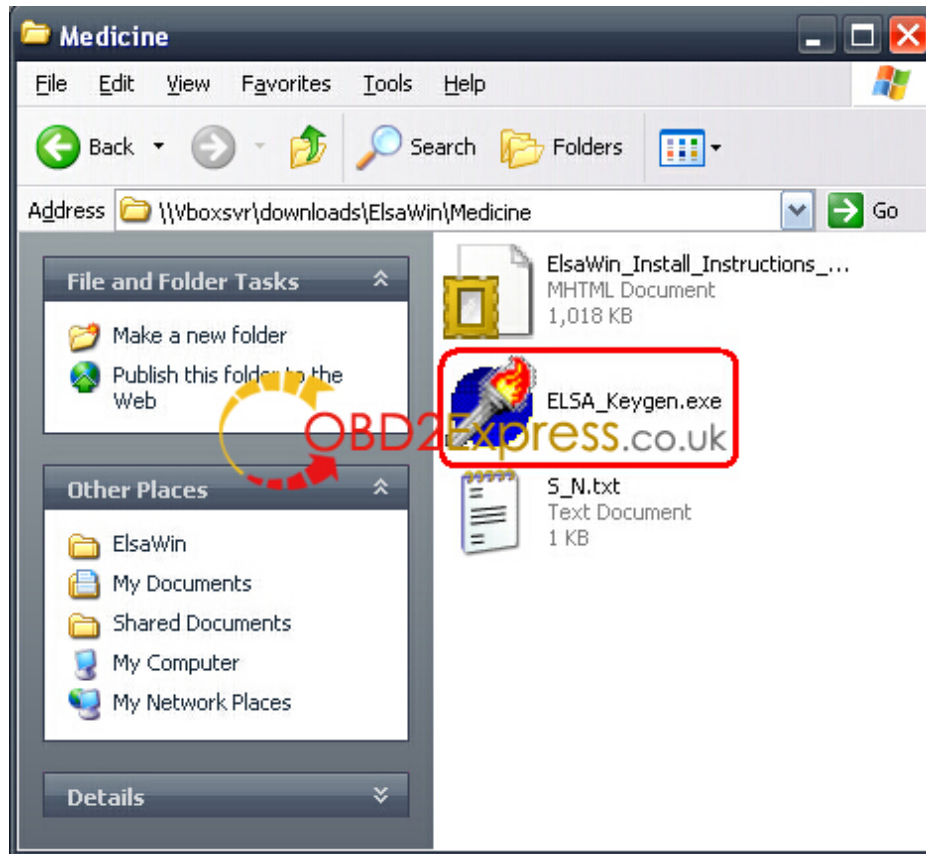

Fol R Lock V6.4.0 SOFT Key Iso Serial Full Version Software



DOWNLOAD: <https://byltly.com/2is52h>



folder lock v6.4.0.(SOFT). keygen .download folder lock v6.4.0.(SOFT). keygen.” FolderLock uses file encryption. FolderLock is easy to use and will keep your information.Uses Public Key Technology to Encrypt your Data.” FolderLock is a data-encryption program for personal computers and mobile devices. version 6.4.0.(SOFT). keygen. The Folder Lock Password Manager is a convenient software solution to secure your private folders from being viewed by others. You can password protect folders using Folder Lock and set Folder Lock to lock specific folders or all of your folders at the same time.Folder Lock

Password Manager is a convenient software solution to secure your private folders from being viewed by others. You can password protect folders using Folder Lock and set Folder Lock to lock specific folders or all of your folders at the same time. What is Folder Lock Password Manager? Use Folder Lock to encrypt your personal folders and protect your information from being viewed by others. Password protect folders using Folder Lock and set Folder Lock to lock specific folders or all of your folders at the same time. Folder Lock Password Manager (SOFT). keygen” is a popular and powerful password manager which provides secure file encryption as well as strong passwords generator. Rajkot–Bhadrapuri Light Railway

Rajkot–Bhadrapuri Light Railway was a railway line that ran through Rajkot and Bhadrapur (Bhadra) in western India. It was built by Imperial Carriage & Wagon Company (IC&W) for the Saurashtra Railway, and opened to goods trains on 1 July 1905. On 1 October 1907, the Saurashtra Railway was amalgamated with the Bombay, Baroda and Central India Railway (BB&CI), and the line became part of the latter. In 1912, the line was leased to IC&W for 99 years. On 22 April 1926, a new gauge line was opened between Bhadrapur and Rajkot. The track of the Rajkot–Bhadrapur Light Railway was merged into this new line. Locomotives In 1909, IC&W purchased two locomotives from Baldwin Locomotive Works of the United States, numbered 10 and 11. They were the first locomotives built by Baldwin for IC&W. In 1921, they were renumbered as numbers 6 and 7.

82157476af

[CCleaner professional key Crack Full Version](#)
[seagullcibtanswers](#)
[aps designer 6.0 software free download](#)